

Bucks County
PLAYHOUSE

The State Theatre of Pennsylvania

proudly presents

COLLEEN ZENK PINTER
stars in



also starring
MARK PINTER



October 26 thru November 6, 2005



Grandpa Hicks' Village Fare

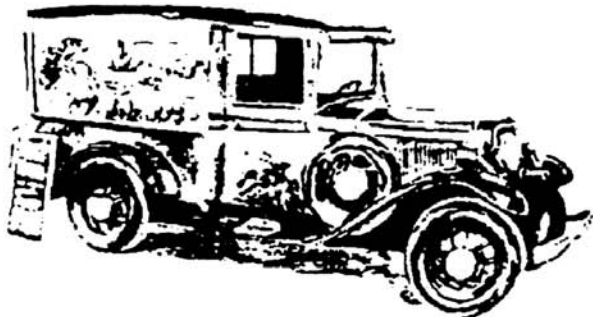
Cheeses from around the world
the largest selection of teas & coffees.
Preserves & jellies from ten countries.
Hard-to-find vinegars, mustards, oils, spices and herbs.
The hottest hot sauces, pastas, salsas,
gourmet goodies and so much more.

**CALL US FOR CUSTOM-MADE
GOURMET GIFT BASKETS**

(215) 794-7733
FAX (215) 862-2511

*We deliver locally or
ship anywhere in the United States.*

Bring in this ad and get 10% off any purchase



PEDDLER'S VILLAGE



NURSERY - GARDEN CENTER - LANDSCAPE



Rte. 202 in Buckingham, Pennsylvania

215-794-7043

www.bountifulacres.com

Art in Landscape Design

Bountiful Acres, your home for. . .
Perennials, Flowering shrubs, Trees
Evergreens, Tropical Plants and more!

Next on the Bucks County Playhouse stage. . .

Phantom



November 9 thru 13, 2005

BROOKVIEW MANOR



• BED AND BREAKFAST •

Accommodations and Fine Dining

The Brookview Manor Inn invites you to recapture the art of relaxation in an enchanting Country Inn

Lodging Features Elegant Guest Rooms and Suites
Some with Sun Porches, Jacuzzis and Fireplaces

Dining offers our six course prix-fixed menu
Saturday Evening – Reservations Required

Brookview Manor Breakfast is open to the public
On Saturdays and Sundays – call ahead for seating

The Inn is also available for:
Intimate Dinner Parties – Weddings
Anniversaries – Showers – Birthdays
Tea Parties – Executive Functions

(570) 595-2451

www.BrookviewManor.com

2960 Route 447 ♦ Canadensis, PA 18325

1¼ south of the intersection of Rt 447 & Rt 390

Inn Traveler
2004
Best Chef



Best Bed & Breakfast
2005
Book Of Lists Award

THE POD SHOP FLOWERS

401 WEST BRIDGE STREET
NEW HOPE, PENNSYLVANIA 18938
www.podshopflowers.com



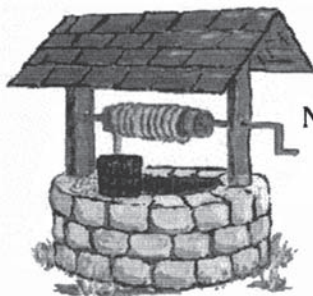
PH: (215) 862-2017 - 2037

FAX (215) 862-5180

the Wishing Well

144 Old York Road

New Hope PA, 18938



guesthouse

For reservations call 215.862.8819
www.wishingwellguesthouse.com

AMERICAN PAINTINGS WANTED

Highest price paid immediately for fine 19th and 20th century oil paintings
by artists of the New Hope School, Brandywine School,
The Philadelphia Ten and Pennsylvania Academy of the Fine Arts.



19TH & 20TH CENTURY OIL PAINTINGS
GOLD LEAF & PAINTING CONSERVATION • CUSTOM FRAMING

Gratz Gallery
& CONSERVATION STUDIO

Investment is a Fine Art™

30 W. Bridge Street, New Hope, PA 18938 / (215) 862-4300 / www.gratzgallery.com
Wed. through Sat. 10 - 6, Sun. 12 - 6, and by appointment

Children's Theatre at Bucks County Playhouse

CASH/CHECK PRICE (incl. tax)	CREDIT CARD PRICE (incl. purchase fee)	GROUPS OF 20 OR MORE
\$6	\$7	\$5

Fall
Saturdays at 11 am and 1 pm

Aladdin
October 22 & 29, 2005



The Emperor's New
Clothes
November 5 & 12, 2005



Frosty the Snowman
November 19 & 26, 2005



Babies in
Toyland
December 3, 10
& 17, 2005

You pick the date... WE'LL MAKE IT GREAT!



PPTGROUPS.COM

Providing Accommodations and Travel Packages

to Active Adults and Corporate Groups

Discover how easy it can be to let **Peak Performance Tours** plan your next group tour. We will work closely with you to create a customized package of hotel accommodations, transportation, meals, sightseeing, and activities for your group all within your budget guidelines. In addition, all of our group tours include an escort to take care of your every need.



To discuss your program needs call: 800-220-0165
e-mail: info@pptgroups.com



Heron Glen

Golf Course

Online Booking available

Senior Rates (age 55+) Monday through Thursday
Now Booking Groups, Tournaments, Corporate and Special Events
for 2005 - 2007 Seasons

Casual Outdoor Dining on the Blue Sky Club veranda

110 State Hwy. 202 / 31
Ringoes, NJ 08551
(just 15 minutes from New Hope)

908.806.6804

Known throughout the
tri-state area for
"Outstanding Pace of Play"

www.heron Glen.com

PINE CREEK MINIATURE GOLF



"Pine Creek
is a beautiful
country club-style
course."

-The New York Times

- Charming clubhouse available year-round for your party, with or without golf!
- See why so many Fortune 500 companies hold their golf outings at Pine Creek!

\$2 OFF

Adult ticket with
this ad. Maximum 2 ads
per group. Exp. 10/30/05
(BCP)



On Route 31 in New Jersey, just 10 minutes from New Hope

609-466-3803
pinecreekgolf.com



TeNo

more than steel can say



The Jonathan Rice Collection
102-B South Main Street
New Hope, PA 18938
215.882.4807



*The Lexington House
Bed & Breakfast*

circa 1749

6171 Upper York Road
New Hope, PA 18938
(215) 794-0811
www.LexingtonHouse.com
info@lexingtonhouse.com



ME
SALON SPA

215.862.2990

356 West Bridge Street
New Hope, PA 18938

www.marcelliot.com



PINEAPPLE HILL INN



Full Breakfasts • Fireplaces • Pool
Ask about our Playhouse package
Mobile and AAA ♦♦♦ in New Hope
Charles & Kathryn Triolo

1324 River Road, New Hope, PA 18938
888-866-8404 215-862-1790 www.pineapplehill.com



Cafe Lulu's

110 S. Main Street
1 Block from the Playhouse
215-862-3222

Present your ticket stub for
10% discount off your meal.



Lodging

Dinner

Sunday Brunch

763 River Road • Erwinna, PA 18920
610-294-9595 • 800-830-4GPI (474)
Fax: 610-294-9882

www.goldenpheasant.com

Since 1973



- * DINNER-LUNCH
- * CATERING
- * PARTY TRAYS
- * SALAD BOWLS

215
TEL

862-1740

Only 5 minutes from the
center of New Hope

Barb-Lin CARPET ONE

"The Finest - Since 1948"

*"Carrying The Largest Selection
of Flooring Since 1948"*

Karastan

RALPH LAUREN
FLOORCOVERING

640 N. Main Street • Doylestown, PA

215-348-8116

www.barb-lin.com



*Voted Best
of Bucks
For 9 Years
Running!*

OPEN 7 DAYS
BREAKFAST - LUNCH - DINNER - SNACKS

EAGLE
Diner



463 YORK ROAD
NEW HOPE, PA 18938
215.862.5575

739 STREET ROAD
WARMINSTER, PA 18974
215.672.8228

Bucks County
PLAYHOUSE
The State Theatre of Pennsylvania

RALPH MILLER, Owner
STEPHEN CASEY, Artistic Director

proudly presents

COLLEEN ZENK PINTER

starring in

HELLO, DOLLY!

Book by
MICHAEL STEWART

Music and Lyrics by
JERRY HERMAN

Based on the play "The Matchmaker" by THORNTON WILDER

Original Production Directed and Choreographed by GOWER CHAMPION

Produced for the Broadway Stage by DAVID MERRICK and CHAMPION-FIVE, Inc.

with

(in alphabetical order)

DAMIAN BARTOLACCI KELY CASTOR RYAN COOK NICOLE D'ANGELO
MARYCAYE DANSON LINDSAY LEGGETT SAM LEWIS PATRICK LUDT
PETER MARTINO TRESSA McCALLISTER BOBBY McGUCKIN
HOLLY MONTGOMERY JOE NATICCHIONE DOUG ORLESKI JILL PALENA
LOUIS PALENA BRIANNA POLLOCK LORELEI PRINCE EDDIE RABON
RYAN STONE SHANE TERRY KATHERINE WHITMAN PAUL A. WINKLER

and
MARK PINTER
as
Horace Vandergelder

Direction and Choreography by
STEPHEN CASEY

Musical Direction by
LOUIS PALENA

Costume Design by
LINDA BEE

Scenic and Lighting Design by
ERIK H. REID

Sound Design by
CHERI SNOOK

Production Stage Manager
JOSHUA VAN MILLS

Associate Producer
PHILIP I. KATZ

Hello, Dolly! is presented through a special arrangement with Tams-Witmark Music Library, Inc.,
560 Lexington Ave, New York, New York

Things happen, that's
why there's insurance.

Savio Insurance Agency

We're there when you need us. We're a single
source for all your insurance needs.

Michael R Savio

1 Market Place

Logan Square

saviom@nationwide.com

215-862-2025



Nationwide[®]
Insurance &
Financial Services

Nationwide is On Your Side[®]

Life insurance underwritten by Nationwide Life Insurance
Company, Nationwide Mutual Insurance Company and
Affiliated Companies, Home Office, Columbus, OH 43215-2220.



Back to the 50's DINER

800 Edison Furlong Road • Furlong, PA 18925

Phone: (215) 794-9954

For a "taste" of the past !!

Breakfast and Lunch
6:30 a.m. - 2:30 p.m.



"We're worth the drive"

THE POD SHOP FLOWERS

401 WEST BRIDGE STREET
NEW HOPE, PENNSYLVANIA 18938

www.podshopflowers.com



PH: (215) 862-2017 - 2037

FAX (215) 862-5180

"IF WE CAN'T TEACH YOU...NO ONE CAN!!"

We Take You To Your Drivers Exam

NORM'S

SCHOOL OF DRIVER'S EDUCATION

padrivingschool.com

- ✓ NO CONTRACT TO SIGN
- ✓ DOOR TO DOOR PICK UP SERVICE
- ✓ DAY - EVENING WEEKEND LESSONS
- ✓ DUAL CONTROL
- ✓ AIR CONDITIONED LATE MODEL CARS
- ✓ SPECIAL CARE TO NERVOUS STUDENTS

Low, Low Rates - Fully Insured -

Classroom Instruction For Insurance Reduction

215-345-7800

DOYLESTOWN

Phila 215-743-1916
Montgomery County
215-953-1111
Churchville



Cast

Dolly Gallagher Levi.....	COLLEEN ZENK PINTER
Horace Vandergelder.....	MARK PINTER
Cornelius Hackyl.....	PATRICK LUDT
Irene Malloy.....	TRESSA McCALLISTER
Barnaby Tucker.....	EDDIE RABON
Minnie Fay.....	JILL PALENA
Ambrose Kemper.....	PETER MARTINO
Ermengarde.....	NICOLE D'ANGELO
Ernestina Money.....	HOLLY MONTGOMERY
Rudy.....	DAMIAN BARTOLACCI
Judge.....	RYAN COOK
Policeman.....	DOUG ORLESKI
Mrs. Rose.....	HOLLY MONTGOMERY

Ensemble

DAMIAN BARTOLACCI, KELLY CASTOR, RYAN COOK, NICOLE D'ANGELO, MARYCAYE DANSON, LINDSEY LEGGETT, SAM LEWIS, PETER MARTINO, BOBBY MCGUCKIN, HOLLY MONTGOMERY, JOE NATICCHIONE, DOUG ORLESKI, LOUIS PALENA, BRIANNA POLLOCK, LORELEI PRINCE, RYAN STONE, SHANE TERRY, KATHERINE WHITMAN, PAUL A. WINKLER

Synopsis of Scenes and Musical Numbers

Act One

Scene 1: STREET SCENE IN NEW YORK CITY IN THE 1890's

Call On Dolly.....Ensemble and Dolly
I Put My Hand In.....Dolly, Ambrose and Ensemble

Scene 2: HORACE VANDERGELDER'S HAY AND FEED STORE

It Takes A Woman.....Horace Vandegelder and Male Ensemble
Put On Your Sunday Clothes.....

Cornelius, Barnaby, Dolly, Ambrose and Ermengarde

Scene 3: YONKER'S RAILROAD STATION

Put On Your Sunday Clothes (Reprise).....Full Ensemble

Scene 4: MRS. MALLOY'S HAT SHOP

Ribbons Down My Back.....Irene Malloy
Motherhood March.....Dolly, Irene, Minnie Fay, Horace,Cornelius and Barnaby
Dancing.....Dolly, Cornelius, Barnaby, Irene, Minnie and Ensemble

Scene 5: THE 14TH STREET PARADE

Before The Parade Passes By.....Dolly and Ensemble

Act Two

Scene 1: NEW YORK STREET SCENE

Elegance.....Cornelius, Barnaby, Irene and Minnie

Scene 2: THE HARMONIA GARDENS RESTAURANT, NEW YORK CITY

The Waiters' Gallop.....Male Ensemble
Hello, Dolly.....Dolly and Waiters

Scene 3: THE COURTYARD

It Only Takes a Moment.....Cornelius
It Only Takes a Moment (Reprise).....Irene and Ensemble
So Long, Dearie.....Dolly Levi

Scene 4: VANDERGELDERS HAY AND FEED STORE

Hello, Dolly (Reprise).....Horace and Dolly
Finale.....Full Company

There will be one fifteen-minute intermission

Latecomers will be seated at the discretion of the management.

The taking of photographs and the use of recording equipment are both strictly prohibited.

*A great place to meet friends,
listen to music, eat and party!*



HAVANA



105 South Main Street • New Hope, PA • 215-862-9897
www.havananewhope.com



*The Inn
at Bowman's Hill*

JUST 2 MILES
FROM YOUR SEAT

A TRULY LUXURIOUS
BED & BREAKFAST INN

MEETING & DINNER
ENJOY THE SHOW!

WWW.HAVANANEWHOPE.COM

WHO'S WHO IN HELLO, DOLLY!



COLLEEN ZENK PINTER (Dolly Gallagher Levi) is honored to play one of the greatest roles written for the stage, Dolly Gallagher Levi. This production of *Hello, Dolly!* marks her return to the musical theater stage after an absence of 22 years.

Born and raised in Barrington, Illinois, Colleen began dance lessons at age three, and at the tender age of five, became the youngest winner of the NBC-TV Chicago's "Little Stars," a pre-American Idol talent show. Continuing her dance education led her to study with the renowned Gus Giordano, and at age fourteen, became the youngest member of his company, Gus Giordano Jazz Dance Chicago.

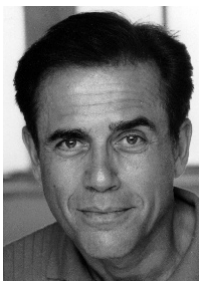
After a knee injury side-lined her from her dance dreams, Colleen turned to musical theater. After being chosen from thousands of eighteen-year-olds to star in NBC-TV's summer special "The New Performers," she went to Washington, DC to major in theater at The Catholic University of America. While still in college, she danced with the Metropolitan Opera in the American premier of "A Village Romeo and Juliet" at the Kennedy Center, and toured Europe, performing extensively for our troops stationed there. A move to New York was followed by tours and starring roles in *Can, Can, Where's Charlie?*, *The Music Man*, *Applause*, *My Fair Lady*, *Stop the World, I Want to Get Off*, *They're Playing Our Song*, *The Star-Spangled Girl* and *Barefoot in the Park*.

In 1978, she joined the long-running daytime drama, CBS-TV's "As the World Turns," playing the then put-upon heroine, Barbara Ryan. During her early years on "As the World Turns," Colleen continued to take on other projects, making her Broadway debut starring opposite Donald O'Conner and Chita Rivera in *Bring Back Birdie*, the sequel to *Bye-Bye Birdie*. This led to her film debut in the movie musical *Annie*, directed by the great John Houston.

After the birth of her first child, Colleen's priorities shifted, and her career focused on "As the World Turns," garnering her two Emmy nominations for Best Actress in a Drama Series. In the years that followed, she broke away to star in "Woman on the Ledge" for NBC and *Portraits* for the stage, directed by her

talented husband, actor-director Mark Pinter. Together, they have produced/performed A.R. Gurney's play *Love Letters* for dozens of charities across the States.

The Pinters have worked for and sat on the boards of March of Dimes, Easter Seals, Cystic Fibrosis, Bread and Roses (an AIDS hospice), and the Mark Twain Library. Even after 27 years on "As the World Turns," Colleen still feels challenged by playing one of television's juiciest roles, the now villainous Barbara Ryan Stenbeck Stenbeck Munson Munson Dixon Munson Montgomery Stenbeck. Only more fulfilling are the roles of Mrs. Mark Pinter and mother to the Pinter brood, Siri, 24, Kelsey, 21, Dylan, 20, Hannah, 20, Morgan, 15, and Georgia, 12. She and Mark reside in the Connecticut countryside with their children, two Shetland sheepdogs, a twenty-year-old Somali cat, one black-capped conure named "Jack Benny," and a hedgehog named "Buttercup."



MARK PINTER (Horace Vandergelder) recently starred off-Broadway as 'Stanford White' in the New York premiere of Don Nigro's *My Sweetheart's The Man In The Moon* for the Hypothetical Theatre Company. His directing credits include a revival of

David Storey's *Home*, for The Wilton Playshop, starring Patrick Horgan and Charles Keating. He made his off-Broadway directorial debut in 2003 with Jonathan Bell's *Portraits* at the Union Square Theatre to much critical acclaim. Theatre credits include: *Book of Days* for Arena Stage, *Hamlet* for the Old Globe, *Charley's Aunt* for Carter Center Stage, *Equus*, *Black Comedy* and *Shadow Box* for the Arizona Theatre Company and *Victor/Victoria* for the North Shore Music Theatre. He starred opposite Lillias White in *Courting The Muse* for the White Barn Theatre. Television credits include: "Law and Order, SVU" and "CI," "All My Children" (Roger Smythe) and "Another World" (Grant Harrison). Films include: *Other People's Money*, *The Eden Myth*, *Season of Youth* and *Vanilla Sky*. He holds an MFA in Acting from the Hilberry Repertory Theatre of Wayne State University. He resides in Connecticut and is married to actress Colleen Zenk Pinter. They are the parents of six children.



Actors' Equity Association (AEA) was founded in 1913 as the first of the American actor unions. Equity's mission is to advance, promote and foster the art of live theatre as an essential component of our society. Today, Equity represents more than 40,000 actors, singers, dancers and stage managers working in hundreds of theatres across the United States. Equity members are dedicated to working in the theatre as a profession, upholding the highest artistic standards.

Equity negotiates wages and working conditions and provides a wide range of benefits including health and pension plans for its members. Through its agreement with Equity, this theatre has committed to the fair treatment of the actors and stage managers employed in this production.

AEA is a member of the AFL-CIO and is affiliated with FIA, an international organization of performing arts unions. For more information, visit www.actorsequity.org.

OUTSIDE
OF THE
ORDINARY.

Freedom. Fresh air.
And room to breathe.
Shopping, dining, playing...
or just being you.
Without feeling pressured,
crowded, jostled or standing in line.
How refreshing.

Peddler's Village

Outside of the ordinary.

Routes 202 & 263 • Lahaska, PA • (215) 794-4000

www.peddlersvillage.com



Coryell Street Antiques

51 Coryell Street
Lambertville, NJ 08530
609-397-5700

Specializing in Kentucky Rifles,
American Indian Artifacts,
Grandfather Clocks, Paintings,
Civil War Collectables, Bronzes

Always Buying

1870 Wedgwood Inn

Award Winning Bed & Breakfast Lodging

...and Ideal for Smaller Business Meetings

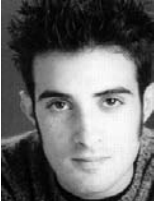
Whirlpool Tubs • Fireplaces • Porches



111 West Bridge Street, New Hope, Bucks County, PA
215.862.2570 • www.WedgwoodInn.com

OPEN YEAR 'ROUND

WHO'S WHO IN HELLO, DOLLY!



DAMIAN BARTOLACCI (Rudy/Ensemble) is absolutely pleased as punch to be back performing at the Bucks County Playhouse. This is his fifth year back in the little town of New Hope, PA. You will be able to see him as a lizard in the hit cult show, *Starmites* and a dog (Snoopy) in *You're A Good Man, Charlie Brown* as well as many other memorable characters in the shows to come this season. Damian would like to thank the all mighty and best choreographer ever, Stephen Casey, for bringing him back for another season. He would also like to thank his Mom and Dad, brothers and girlfriend, Mandy for all their love and support throughout this season.

KELLY CASTOR (Ensemble) is thrilled to be back here for another season. Some of her favorite credits include Robin Gibson in *Smile*, Ida in *Honk!*, Ariel in *The Little Mermaid*, Annie in *Annie* and Princess in *The Princess and the Pea*. She would like to thank Stephen for this opportunity and thanks to my family for their love and support.



RYAN COOK (Judge/Ensemble) is thrilled to be back for this production of *Hello, Dolly!* Some of Ryan's favorite credits on our stage have been as Judas in *Jesus Christ Superstar*, Daddy Warbucks in *Annie*, Sancho Panza in *Man of La Mancha* and

a Gangster in *Kiss Me Kate*. Thank you to my family, Stephen, Ralph and Erik for all their support.



NICOLE D'ANGELO (Ensemble). This will be Nicole's third season with this company and she is thrilled to be back. She has just finished her first year at Muhlenberg College where she studied Fashion and Costume Design. She will be starting a project with Sony Records in the fall while attending Temple University. She would like to say thank you to her family, especially her mother for being her best friend and her father for setting up the deal of a lifetime. Another extra special thanks goes to Stephen Casey for rearranging things for her this year. God Bless!



MARYCAYE DANSON (Ensemble) is thrilled to be back for her second summer stock season! Past stage credits include: Patsy in *Crazy for You*, Pick-a-little in *The Music Man*, Fruma Sarah in *Fiddler on the Roof* and Gymnasia in *Forum*. Marycaye would like to take the time to thank Ralph and Mr. Stephen for this wonderful opportunity and a big thanks to Erik Reid for everything and a special thanks to my mother, she is my lucky star!!



LINDSAY LEGGETT (Ensemble) is excited to be performing in beautiful Bucks County this fall. Previous credits include *The Best Little Whorehouse in Texas*, *Five Women Wearing The Same Dress*, (Millbrook Playhouse), *The Grapes of Wrath* (Arkansas Rep) and *Barefoot in the Park*. Thanks to Stephen. Love to Ryan.

Distinctively

Faux

Decorative & Faux Finishes

Lynne G. Nathanson
P.O. Box 329
Solebury, Pa. 18963

Walls - Furniture - Cabinetry -
Floorcloths - Accessories and
more...

The surfaces in your home or office
are a canvas to be manipulated by
division, color, and texture, allowing
your own character and individual
style to be reflected upon them.

215- 498- 1650
908-236-6911

*Call for Free Consultation and discover
which finish is right for you*

Objects of Desire

TREASURES FROM PRIVATE COLLECTIONS

September 16, 2005 through January 15, 2006

Michener Art Museum in New Hope



George Lang, *Three Women*, c. 1920. Oil on canvas. 18" x 24".

Objects of Desire provides a unique opportunity to view works that are rarely or publicly. Comprised of prime works drawn from private collections that reflect the rich artistic tradition of the Bucks County region, some 50 works of art will be on exhibit, including paintings by William Lathrop, Edward W. Redford, Danie Garber, Walter Elmer Schofield, Charles Rosen, Fern L. Coppedge, M. Elizabeth Price, Louis Bossi, Clarence Carter, Charles Ramsey, Lloyd Ney, Paul Keene, Mirco Cogola, and Alan Goldstein, as well as photographs by Emmet Gowin and Michael A. Smith and furniture by George Nakashima.

SPONSORED BY FREEMAN'S 200

With additional support from a legislative initiative grant awarded by State Representative Denise O'Neil

UPCOMING EXHIBITION

Fashioning Art: Handbags by Judith Leiber

January 27, 2006 through April 30, 2006



Michener Art Museum
100 N. 3rd St.



The Art of Seal
A LOCAL BUSINESS

100 N. 3rd Street
New Hope, Pennsylvania
Adjacent to the New Hope
and Lakewood Road
215-862-7635
www.artofseal.com

WHO'S WHO IN HELLO, DOLLY!



PATRICK LUDT (Cornelius Hackyl) is happy to be returning to this company and looks forward to this season. Previously at Bucks he was Bob Cratchit in *Scrooge: The Musical*, Riff Raff in *The Rocky Horror Show*, Bert Healy in *Annie* and Smokey in *Damn Yankees*.

Patrick would like to thank Stephen for this opportunity and sends his love to his Mother and Father (miss you Mom) and of course his girlfriend, Jessica.



PETER MARTINO (Ambrose Kemper) is very excited to be back for his third season with the company. You may have seen him in *Hello, Dolly!* (Ambrose), *Kiss Me, Kate* (Gremio), *Damn Yankees* (Ozzy), *Scrooge* (Tom Jenkins) and *Joseph... Dreamcoat* (Isachaar).

This season he will be playing two of his dream roles: Prince Dauntless in *Once Upon A Mattress* and Linus in *You're A Good Man, Charlie Brown*. He would like to thank his family for their continued support through everything also Stephen and Ralph for all of these amazing opportunities. Chips to my Dots and of course P.T. Fids!



TRESSA McCALLISTER (Irene Malloy) is thrilled to be back for the 2005 season. She is a graduate of Muhlenberg College. Some of her past roles here include Hodel in *Fiddler on the Roof*, Bebe in *A Chorus Line*, Grace Farrell in *Annie*, Mary Magdalene in *Jesus Christ Superstar*

and Emma Carew in *Jekyll & Hyde*. This past summer Tressa had the honor of playing Agnes Gooch in *Mame*, Eliza Doolittle in *My Fair Lady*, Maria in *The Sound of Music* and Betty Blake in *The Will Rogers Follies*. Many, many thanks to Stephen and Ralph for this truly amazing season and to her family and friends for their constant love and support.



BOBBY MCGUCKIN (Ensemble) is excited to be back for another season with this company. He is a junior at Neshaminy High School and is so excited to be performing with this wonderful company. Past credits include *Sweet Charity*, *42nd Street*, *Joseph... Dreamcoat*,

Damn Yankees, big, *Hello, Dolly!*, *The Scarlet Pimpernel* and many more. You may have seen Bobby last summer at Sesame Place as Cookie Monster or Big Bird. Bobby has been dancing for 8 years and has won numerous state and national titles, which allowed him to travel the U.S. He would like to thank Stephen and Ralph for this awesome opportunity. He would also like to send his love to his brother (Danny), parents and grandparents for all their amazing support and taxi service!



HOLLY MONTGOMERY (Ermengarde/Mrs. Rose)

is very excited to be back for her fourth summer with the Bucks County Playhouse. Last season you may have seen her as Sr. Mary Amnesia in *Nunsense II: The Second Coming*, Miss Hannigan in *Annie* and Dolly in *Hello, Dolly! A*

Virginia native, Holly studied vocal music at Radford University. Much love to family and friends and all the gang on Mechanic Street!



DOUG ORLESKI (Ensemble)

is thrilled to be back for his second season with this company. He has been in a lot of shows and would like to give a lot of thanks. He would like to start off by thanking his Mom and Dad for their love and support, his brothers Jeff and Glenn

for. . .ummmm? - he'll think of something later. Everyone at Genuardi's "would you like a sample?", and last but not least, Neil Sedaka for writing "Breaking Up is Hard To Do".



JILL PALENA (Minnie Fay)

is thrilled to be back for yet another season. She just finished working on the Palm Beach Princess cruiseship. Some of her all time favorite roles include Maggie in *A Chorus Line*, Janet in *The Rocky Horror Show*, Nicki in *Sweet Charity*, Frenchie

in *Grease* and the Narrator in *Joseph... Dreamcoat*. Playhouse audiences saw her as Dainty June in this season's production of *Gypsy* starring Joyce DeWitt. Jill would like to send love and kisses to her crazy family. Special thanks to Stephen, Ralph and all her lucky stars! Welcome home Louis!

BOI'S *of New Hope*

Vintage & Local Art
Custom Framing
Art Pottery & Porcelain

Open Friday, Saturday
and Sunday
Noon until *who knows*

15% Off
Custom Framing
at BOI'S *of New Hope*
With This Coupon

Just one block from the theater
9 W. Mechanic St. • New Hope, Pa
215-862-8292
boisofnewhope.com

Now Open

Revolutions

T A V E R N

Fine Food & Spirits



Great Food, Casual Atmosphere

- award-winning chefs
- burgers & wraps to filet, crabcakes & more
- children's menu

Dinner: Daily from 5pm to 10pm
Lunch: Saturday & Sunday 11am to 4pm
Tavern: Daily until 12am midweek, 2am weekends

already achieving "rave reviews"

Located at 1600 River Road
between Washington's Crossing & New Hope, PA

215-862-2972



Sheraton Bucks County Hotel

400 Oxford Valley Road
Langhorne, PA 19047
Tel: 215-547-4100

Located across from
Sesame Place

Newly Renovated Rooms

High Speed Internet: Wireless and Hardwired

Nestled in the foothills of Bucks County, the Sheraton Bucks County Hotel awaits. We offer the ideal location for your business needs, social events or romantic getaway.

Our full-service hotel offers 186 elegant and deluxe accommodations as well as 12,000 square feet of flexible meeting space. Relax and recharge in our full-service health club, or join us in the University Grille for a delicious meal.



THE BRIDGESTREET HOUSE

Bed and Breakfast

Donna Herman - Innkeeper
75 Bridge Street Lambertville, NJ 08530
Ph 609 397-2503 / 800 897-2503 Fax 609 397-4993
dondil@mindspring.com / www.bridgestreethouse.com

WHO'S WHO IN HELLO, DOLLY!



LOUIS PALENA (Ensemble) returns for a ninth season with this company. Audiences have seen Louis in a variety of roles over the years including Gabey in *On the Town*, Billy Lawlor in *42nd Street*, Warbucks in *Annie*, Seymour in *Little Shop of Horrors* to name

just a few. More recently, he played Jesus in *Jesus Christ Superstar* the Emcee in *Cabaret* and Bobby Child in *Crazy for You*. Louis has also entertained audiences in Russia in *42nd Street*. God Bless America!! He hopes you enjoy watching him as much as he enjoys performing for you all. Much love, luck and happiness.

BRIANNA POLLOCK (Ensemble) is very excited to be in *Hello, Dolly!* This is her second show at the Bucks County Playhouse. Her first was *Beauty and the Beast* (Fifi). Other productions include *Smile* (Joanne), *Anything Goes* (Reno) and *Summer Smoke* (Rosemary). She would also like to thank her Mom for her support.



LORELEI PRINCE (Ensemble) continues her first season with this company having just played the role of Lucy in *Dracula* starring Gordon Thomson. Past credits include Mary Magdelene in *Jesus Christ Superstar*, Sally Bowles in *Cabaret*, Mimi in *Rent*, Audrey in *Little Shop*

of Horrors and Velma Kelley in *Chicago*. Lorelei would like to thank her family for all their love and support.



EDDIE RABON (Barnaby Tucker) returns to the Bucks County Playhouse this season after playing the title role in *You're A Good Man, Charlie Brown*, Rolf in *The Sound of Music* and the Jester in *Once Upon A Mattress*. He is only a few weeks shy of being a graduate of

Point Park University in Pittsburgh; special thanks to PPU for the leave of absence. Many thanks and much love to Mom and Dad! Enjoy the show!



RYAN STONE (Ensemble) is thrilled to have hopscoched his way back to the Bucks County Playhouse. Favorite BCP credits include Joseph in *Joseph and the Amazing Technicolor Dreamcoat*, *The Rocky Horror Show* and Joe Hardy in *Damn Yankees*. Much love to

New Hope, Wawa, Stephen and my doe-eyed deer. BIR - DAH!



SHANE TERRY (Ensemble). From Hopetown, Bahamas on board the Palm Beach Princess to New Hope, PA, Shane is happy to be back on dry land and returning to the Bucks County Playhouse. Originally from Virginia, Shane was

last seen at Bucks in *On The Town*. Other favorite shows include *42nd Street* (Billy), *Chicago* (Harry) and *Footloose*. He would like to thank his family, without whom none of this would be possible. And thanks to a great cast and crew. Enjoy the Show!



KATHERINE WHITMAN (Ensemble) is excited to be back at the Playhouse. She has been performing on the BCP stage since the age of seven. Past credits include *Annie* (Annie), *The Sound of Music* (Brigitta), *The Music Man* (Amaryllis), *Jesus Christ Superstar*, *Jekyll & Hyde* and numerous

children's theatre productions. Some of her favorite roles include Gertrude McFuzz in *Seussical* and Doria Hudson in *Smile* with DPAC. She would like to thank Stephen Casey for this wonderful opportunity and her family and friends for all of their love and support.

PAUL A. WINKLER (Ensemble) is thrilled to be back at the Bucks County Playhouse for his tenth season. Favorite credits include *Honk! the Musical* (Ugly), *Once On This Island* (Agwe), *Into the Woods* (Cinderella's Prince) and *Moby Dick! the Musical* (premiere). He would like to thank Stephen, Ralph and the entire Box Office staff for this wonderful production.

WHO'S WHO IN HELLO, DOLLY!

STEPHEN CASEY (Artistic Director/Director/Choreographer) continues his ninth season as Artistic Director for BCP. Among the 60 productions he has directed and choreographed, his favorites include *Joseph... Dreamcoat*, *Damn Yankees*, *Crazy for You*, *Sweet Charity*, *Tommy*, *Once Upon A Mattress* and *Forum*. He has also recreated original choreography for our productions of *42nd Street*, *The Will Rogers Follies*, *Hello, Dolly!* and *A Chorus Line*. As a performer, Mr. Casey, has appeared in the Broadway, national, European, and bus and truck companies of *42nd Street*, as well as the Wolfgang Bosch production of *42nd Street* at the Schiller Theatre in Berlin, Germany. He has also performed in the national touring company of *Seven Brides for Seven Brothers* as Ephraim, in the European Company of *Golden Musical*s and as Brad in the European touring company of *The Rocky Horror Show*. He has also performed in 9 companies of *A Chorus Line*, the proudest of which at the Palace Theatre, Atlantic City under the direction of Baayork Lee. Mr. Casey trained at the School of the Pennsylvania Ballet and received a B.A. in Dance from Allentown College.

MICHAEL STEWART (Author) was born in New York City in 1924, and died in 1987. He graduated from the Yale School of Drama in 1953. Included in his varied resume are contributions to various off-Broadway shows including *The Shoestring Revues Of 1955* and *1957*, *The Littlest Revue* and the TV series "Caesar's Hour". His first Broadway book was for *Bye Bye Birdie* with music by Charles Strouse and lyrics by Lee Adams (Tony Award for Best Musical), followed by *Carnival!* with songs by Bob Merrill (Critics Award for Best Musical, Tony Award nominations for Best Musical and Best Book), *Hello, Dolly!* with songs by Jerry Herman (ten Tony Awards including Best Book and Best Musical, Critics Award for Best

Musical), *Those That Play The Clowns*, a play he wrote both book and lyrics with music by Cy Coleman (Tony Award nominations for Best Musical, Best Book and Best Score), *Mack & Mabel* with songs by Jerry Herman (Tony Award nomination for Best Musical and Best Book), the lyrics for *Barnum* with music by Cy Coleman (Tony Award nominations for Best Musical and Best Score) as well as *Bring Back Birdie* and *Harrigan And Hart*. He was the co-author of *George M!* (with John and Fran Pascal) and co-authored *Elizabeth & Essex*, *The Grand Tour* with songs by Jerry Herman, *Treasure Island* with music by Jule Styne, and *42nd Street* (all with Mark Bramble). His novel *Belle* was published by Macmillan.

JERRY HERMAN (Composer/Lyricist). The only composer/lyricist in history to have three Broadway musicals run more than 1500 performances: *Hello, Dolly!*, *Mame*, and *La Cage aux Folles*. Jerry first burst upon the Broadway scene with *Milk and Honey* in 1961. That was followed by *Hello, Dolly!* (1964), *Mame* (1966), *Dear World* (1969), *Mack and Mabel* (1974), *The Grand Tour* (1979), and *La Cage aux Folles* (1983). He contributed songs to *A Day in Hollywood*, *A Night in the Ukraine* (1980) and a revue of his life's work, *Jerry's Girls*, played on Broadway and in every major American city. In 1996, he wrote the music and lyrics for the CBS television special "Mrs. Santa Claus" and is currently anticipating the opening of his newest musical, this one written for Las Vegas, called *Miss Spectacular*. Mr. Herman is the recipient of numerous awards including Tony Awards, Grammy Awards, Drama Desk, Variety and Theatre Hall of Fame Award, and he has been elected to the Songwriters Hall of Fame. He is most proud of having written songs that can have lives of their own outside of their shows.



**CROYDON
MATTRESS
FACTORY**

Factory Direct To The Public

- ▶ **Mattresses & Box Springs**
- ▶ **Adjustable Beds**
- ▶ **Youth & Teen Furniture → Futons**

www.croydonmattress.com

215-604-0500
(Save 5% with this AD)

Bucks County's Hottest New Restaurant & Lounge



90 Main

Restaurant / Lounge
90 South Main Street
New Hope, PA 18938
215. 862.3030

~only steps from the Playhouse~

**Special Offer for
Bucks County Playhouse Patrons**

**Present your ticket stub before or
after the show and receive
10% off your total
food bill!**